



EXTERNAL THERMAL INSULATION COMPOSITE SYSTEMS



OF NOVAMIX CERTIFIED EXTERNAL THERMAL INSULATION COMPOSITE SYSTEM

- ✓ Certified energy saving and increased bioclimatic comfort
- ✓ Certified system's reaction to fire
- ✓ Complete control of the construction based on specific specifications and certifications
- ✓ High durability and long-life cycle
- ✓ Maximum protection of facades and structural elements
- ✓ Economic and efficient upgrade of buildings
- ✓ Protection from climatic factors
- ✓ Optimal utilization of interior spaces
- ✓ Reduction of CO2 emissions in the environment
- ✓ Architectural versatility in the facades design

EXTERNAL THERMAL INSULATION COMPOSITE SYSTEM



NOVATHERM SYSTEM is an external thermal insulation composite system that consists of high-quality products and is certified according to EAD 040083-00-0404, which has replaced ETAG 004.



SCAN ME

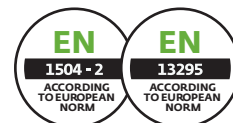
All NOVATHERM SYSTEM products are CE marked and have the necessary certifications on the respective European standards. At the same time, some of them have been certified as very low VOC emission products for maximum protection of the user and the environment.



WATERPROOFING ZONE



SC 200 PENETRATE



Two component, cement-based mortar for creating waterproofing zone in external thermal insulation composite system applications.

Color: White, Grey.

Packaging: (A+B) (25+7)kg.

PRIMERS



NOVADUR W



Acrylic primer – stabilizer in water dispersion for waterproofing and stabilizing absorbent surfaces. It is applied undiluted.

Packaging: plastic buckets of 1L, 5L, 20L.



PLANO CONTACT



Light beige, quartz primer for creating adhesion bridge of organic plasters like PLANOCOLOR® ACR & SLR on the substrate. If required, it can be tinted with the colorants NOVACOLOR DESIGN PR.

Packaging: plastic buckets of 20kg.



PLANO BOND

Quartz primer based on synthetic resins for creating an adhesion bridge on smooth substrates.

Color: terracotta red for better coverage control.

Packaging: plastic buckets of 5kg, 20kg.



NOVABOND PS FLEX



Flexible cement-based adhesion mortar for fixing thermal insulation boards (EPS W, EPS G, XPS, MW, expanded polyurethane, mineral fibers). Also suitable as basic coat with NOVATHERM NET incorporation, prior to the application of organic plasters PLANOCOLOR® ACR & SLR. **Based on its certification, it can also be used without mechanical fixing if there is a relevant requirement.** Color: White, Grey.

Packaging: 25kg.



NOVABOND PS FIBER



Fiber reinforced cement-based mortar for fixing thermal insulation boards (EPS W, EPS G and XPS). Also suitable as basic coat with NOVATHERM NET incorporation, prior to the application of organic plasters PLANOCOLOR® ACR & SLR. Color: White, Grey.

Packaging: 25kg.



NOVATHERM NET

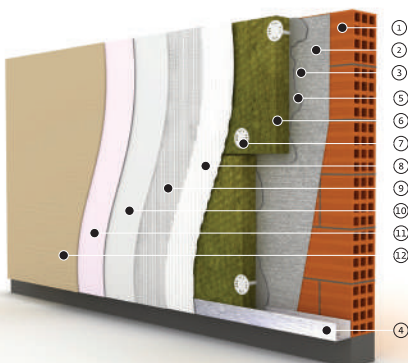


High performance alkali resistant fiberglass net for reinforcing base coat renders on external thermal insulation composite systems.

Dimensions: Height: 1m, Length: 50m - Weight: 160 gr/m².

Packaging: Rolls of 50m².

ETICS APPLICATION STEPS



1. Existing masonry
2. Adhesion primer PLANO CONTACT, NOVADURW or PLANO BOND
3. High waterproofing zone with SC 200 PENETRATE
4. Starting profile NOVAMIX SA
5. Cement-based adhesion mortar NOVABOND PS FLEX or PS FIBER
6. Thermal insulation panels NOVATHERM EPS W & EPS G, NOVAMIX XPS & MW
7. Anchors for fixing thermal insulation boards NOVAMIX LMX8, LTX 8, LTX10
8. First layer of the basic coat with NOVABOND PS FLEX or PS FIBER
9. Fiberglass net reinforcement NOVATHERM NET
10. Second layer of the basic coat with NOVABOND PS FLEX or PS FIBER
11. Adhesion primer PLANO CONTACT tinted with the colorants NOVACOLOR DESIGN PR
12. Final decorative coating PLANOCOLOR® SLR, ACR or AC + GRANULATES

PLANOCOLOR® ACR 80/100/150/200/250



Water-repellent organic plasters in paste form, in granulometries: 0,8mm / 1,00mm, 1,5mm / 2,0mm / 2,5mm.

With special protection additives from pests, mold, algae (article 95 Regulation 528/2012 & Government Gazette 1367/B16-5-2016).

Color: 260 shades of NOVAMIX FACADE color chart.

Packaging: plastic buckets of 25kg.

PLANOCOLOR® SLR 80 / 100 / 150



Highly hydrophobic silicone organic plasters in paste form, in granulometries: 0,8mm / 1,00mm / 1,5mm.

With special protection additives from pests, mold, algae (article 95 Regulation 528/2012 & Government Gazette 1367/B16-5-2016).

Color: 260 shades of NOVAMIX FACADE color chart.

Packaging: plastic buckets of 25kg.

PLANOCOLOR® AC & PLANOCOLOR® GRANULATES

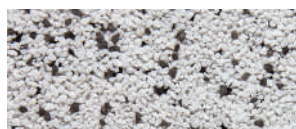


Highly flexible decorative quartz plaster system where a white base is mixed with different types of granulates (coated, natural, glass or with glitter) and as soon as the mixture is in contact with atmospheric moisture it creates a transparent and strong surface that highlights the granulates.

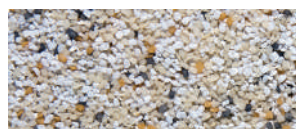
Packaging: PLANOCOLOR® AC (plastic buckets of 5kg)
& PLANOCOLOR® GRANULATES (15 – 25kg).



NS D 40 3162



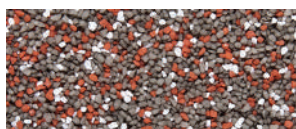
NS D 40 3180



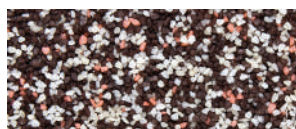
NS D 40 3231



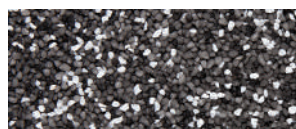
NS D 40 3368



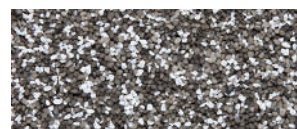
NS D 40 3464



NS D 40 3608



NS D 40 3703



NS D 40 3792

For additional colors scan the QR code



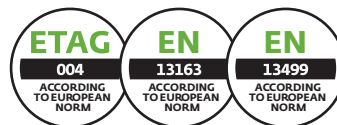
THERMAL INSULATION BOARDS



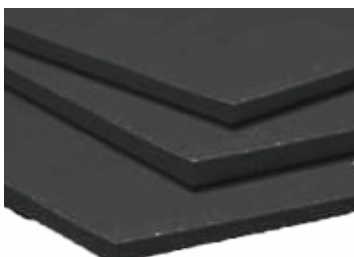
NOVATHERM EPS 80W / 100W / 150W / 200W

Expanded polystyrene thermal insulation boards. Available also in 2 cm thick panels for application in small areas to avoid thermal bridges. Thermal conductivity EPS 80 W $\lambda = 0.036$, EPS 100 W $\lambda = 0.034$, EPS 150 W $\lambda = 0.033$, EPS 200 W $\lambda = 0.033$. $\lambda = W/(m \cdot K)$.

Panel dimensions: 100 x 60 cm.



THICKNESS cm	m ² / PACK	PCS / PACK
5	6	10
6	4,8	8
7	4,2	7
8	3,6	6
9	3	5
10	3	5



NOVATHERM EPS 80G / 100G / 150G / 200G

Graphite expanded polystyrene thermal insulation boards with reduced thermal conductivity coefficient (λ). Available also in 2 cm thick panels for application in small areas to avoid thermal bridges. Thermal conductivity EPS 80 G $\lambda = 0.030$, EPS 100 G $\lambda = 0.030$, EPS 150 G $\lambda = 0.030$, EPS 200 G $\lambda = 0.030$. $\lambda = W/(m \cdot K)$.

Panel dimensions: 100 x 60 cm.



THICKNESS cm	m ² / PACK	PCS / PACK
5	6	10
6	4,8	8
7	4,2	7
8	3,6	6
9	3	5
10	3	5



NOVAMIX XPS

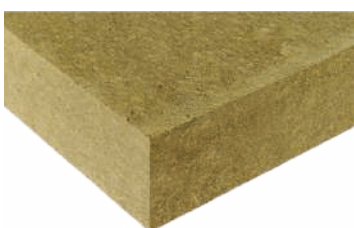
Extruded polystyrene thermal insulation boards.

Thermal conductivity $\lambda = 0.034$ (2 - 5 cm), $\lambda = 0.033$ (6 - 14 cm). $\lambda = W/(m \cdot K)$.

Panel dimensions: 2 cm (125 x 60 cm) & 100 x 60 cm.



THICKNESS cm	m ² / PACK	PCS / PACK	THICKNESS cm	m ² / PACK	PCS / PACK
2	15	20	8	3	5
3	8,4	14	9	2,4	4
4	6	10	10	2,4	4
5	4,8	8	12	1,8	3
6	4,2	7	14	1,8	3
7	3,6	6			



NOVAMIX MW

Thermal insulation boards made of strong mineral rockwool.

Thermal conductivity $\lambda = 0.033$. $\lambda = W/(m \cdot K)$.

Panel dimensions: 100 x 60 cm.



THICKNESS cm	m ² / PACK	PCS / PACK	THICKNESS cm	m ² / PACK	PCS / PACK
3	4,8	20	8	1,8	20
4	4,2	18	9	1,8	18
5	3,6	16	10	1,8	16
6	3	16	12	1,2	20
7	2,4	18	14	1,2	18



NOVAMIX LTX 8 & 10 / NOVAMIX LMX 8

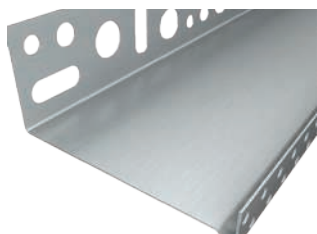
Plastic and metallic anchors.

Head dimensions: 8 & 10mm.



D 8 MM D 10 MM M 8 MM

LENGTH cm		
9,5	7	9,5
11,5	9	11,5
13,5	11	13,5
15,5	12	15,5
17,5	14	17,5
19,5	16	19,5
	18	



NOVAMIX SA

Starting profile.

Length: 2,5m.



DIMENSIONS cm

5,3
6,3
7,3
8,3
10,3



NOVAMIX KA

Fixing studs for starting profile.

DIAM. mm

60
80



NOVAMIX GN

PVC corner profiles with mesh.

Dimension: 2,5m.



DIAM. mm

100 x 100
100 x 150



NOVAMIX NS

PVC drip channels.

Dimension: 2,5m.

DESCRIPTION

Simple
Reinforced



NOVAMIX KS

Polystyrene plugs.

COLOR

White
Grey



EN ISO 14001:2015 EN ISO 9001:2015

novamix

ADVANCED BUILDING MATERIALS

www.novamix.gr



SCAN ME

This edition was published in 2022 by DOMOCHEMICAL S.A.

Copyright© 2022 DOMOCHEMICAL S.A.

No part of this publication may be reproduced, stored in a retrieval system or transmitted by any means, electronic, mechanical, photocopying or otherwise, without prior permission of the publisher.

Legal Notice: The technical data and recommendations included or listed are the outcome of laboratory measurements combined with our current knowledge and expertise. All information and specifications should in any case be considered as indicative. The Company makes every effort to ensure the accuracy of the information provided herein. Product specifications are subject to change without notice and may differ from product images. Due to printing and application procedures, the colors displayed here should be considered as indicative. In particular, variations in materials, substrates and on-site application conditions are such that no warranty can be given or implied reference to the suitability of the materials for trading or use for a particular purpose and conditions of any given project. Anyone interested in using the product must ensure beforehand that the product is suitable for the intended use and in any case, the user is solely responsible for any outcomes associated with the use of product. Among other things, the Company is not responsible for any normal wear or tear from environmental or any other unsuitable conditions. We reserve the right to revise or change the data herein without prior notice. Restrictions and disclaimers apply to the extent permitted by applicable law. The Company has a Technical Support Department, which has exclusive responsibility for providing technical advice and solutions, addressing relevant issues. Requests to the technical Support Department are addressed and answered, only in writing. For the latest and valid version of the Technical Data Sheet, the user of the material must refer to our website www.novamix.gr.

DOMOCHEMICAL S.A.

40 PAPANIKOLI STR., CHALANDRI, 15232, ATHENS

T. +30.210.6893.953

E. NOVAMIX@NOVAMIX.GR

3TH 03/2022